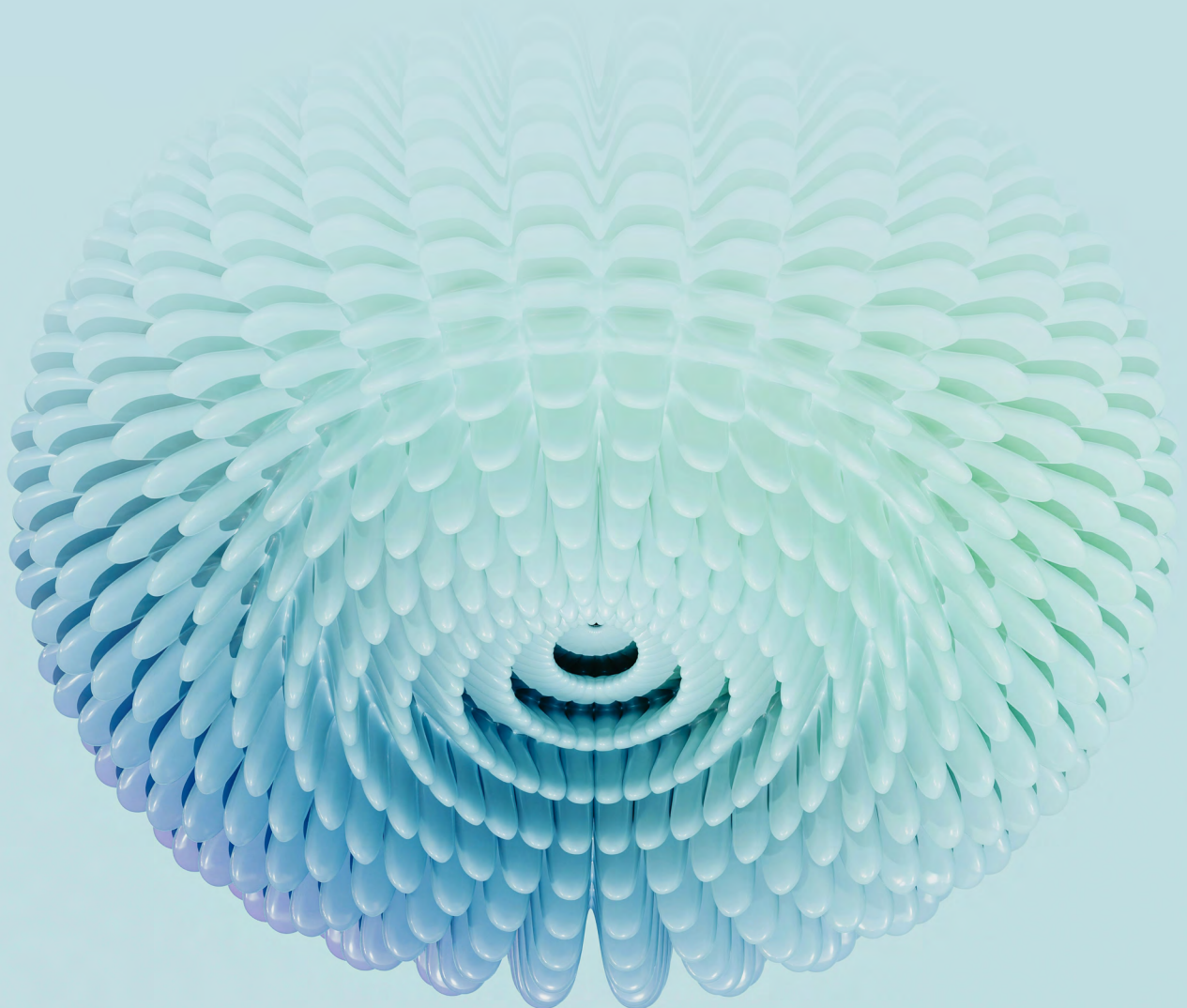


Valid

Transforming IoT with SGP.32:

Revolutionizing PoS Connectivity



Valid

ABOUT VALID

Valid is a leading provider of interoperable mobile services, offering trusted connectivity solutions to device makers, mobile operators, and IoT players worldwide. With nearly seven decades of industry expertise serving a diversity of customers, we are dedicated to delivering future-proof solutions with enhanced security and reliability. Our steadfast commitment to excellence drives us to bring innovations with the latest technologies, prioritizing data security, and enabling our clients to stay ahead in the rapidly evolving digital landscape. Join us in empowering the future of connectivity.

FIND OUT MORE ABOUT US AT:

Valid.com | trustedconnectivity.valid.com

FOLLOW US ON SOCIAL MEDIA:

[LinkedIn](#) | [Facebook](#) | [Instagram](#)

AUTHOR(S):

Caio Hamer – Product Marketing Manager for Connectivity Providers at Valid

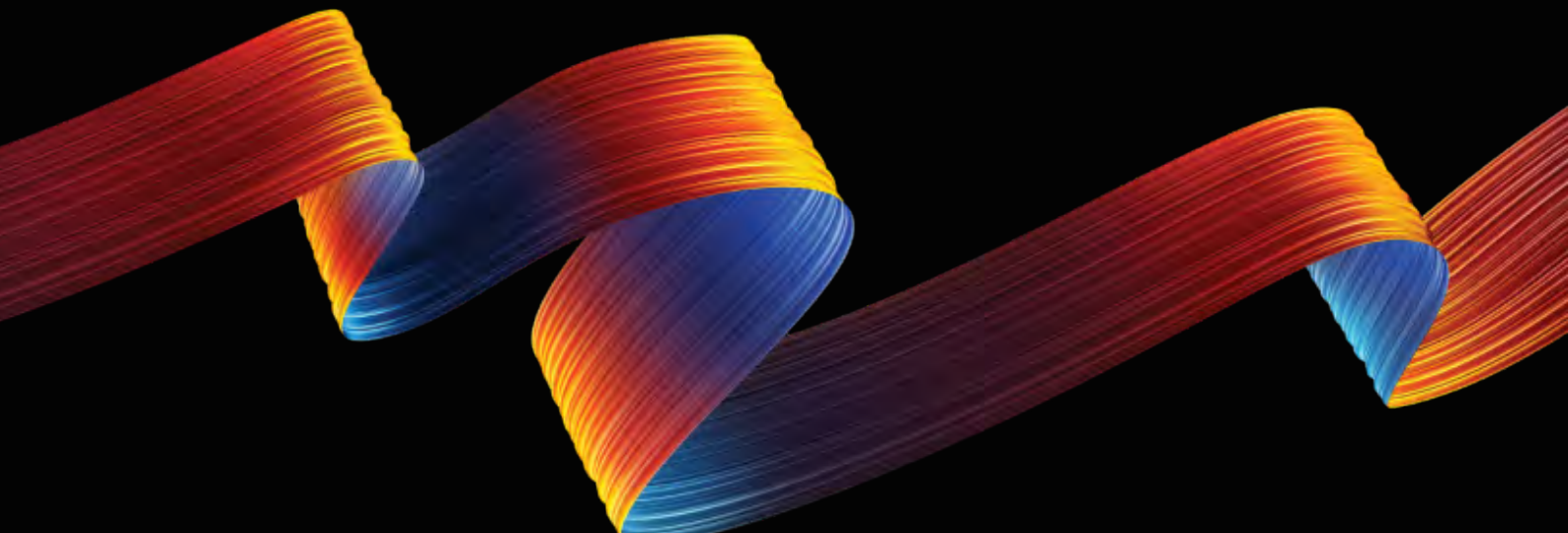


Table of contents

Revolutionizing PoS Operations	04
What is SGP.32	04
How Does It Work?	05
Key Benefits for PoS Service Providers	06
Getting Started with SGP.32	08
FAQ	09

Revolutionizing PoS Operations

Imagine PoS terminals that never experience downtime due to network issues—no matter their location or whether they're on the move.

Now, picture these devices equipped with built-in connectivity, requiring zero human intervention.

With SGP.32, onboarding new devices, switching carriers, troubleshooting at minimal cost, and ensuring seamless cross-border connectivity is as simple as the push of a button. Whether managing standalone or cloud-connected PoS terminals, our solution delivers the reliability and flexibility your business demands.

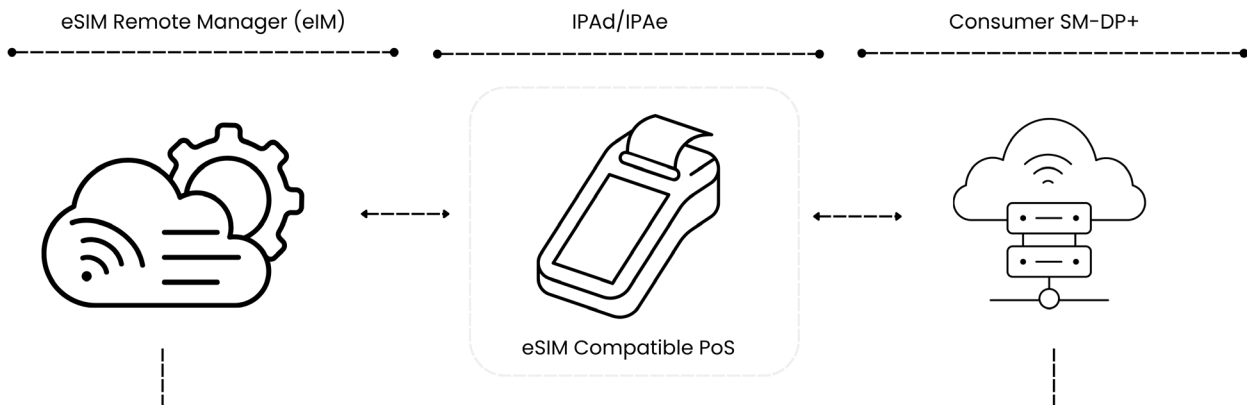
What is SGP.32?

SGP.32 is a cutting-edge IoT architecture tailored to enhance cellular connectivity for Point-of-Sales (PoS) devices. The new SGP.32 architecture powered by eSIM technology, ensures PoS terminals seamless global connectivity, secure transactions, and optimized operations—without manual SIM replacements or costly interventions.



How Does It Work?

SGP.32 simplifies connectivity management by integrating eSIM, IPA and an eIM (eSIM IoT Manager). This ecosystem dynamically manages network connections, ensuring reliable connectivity performance for PoS devices worldwide.



- **eIM:** Enables subscription downloads to PoS device eSIMs via an IPA, without end-user intervention.
- **SM-DP+:** Provisions eSIM profiles and generates activation codes for connectivity subscriptions.
- **eSIM-Compatible PoS:** Supports HTTP communication and Android LPA. eSIM integration can transition from removable to soldered over phases.
- **IPAd:** Includes low-level Secure Element (eSIM) instructions via the modem. LPA (Local Profile Assistant) adheres to GSMA SGP.22v2.x, and IPA (IoT Profile Assistant) follows GSMA SGP.32v1.x.



Key Benefits for PoS Service Providers

1. Simplified Operations

- Profile Switching: Eases profile switching for PoS terminals in the field.
- One SKU for All Markets: Simplified inventory and faster deployments.

2. Operational Efficiency

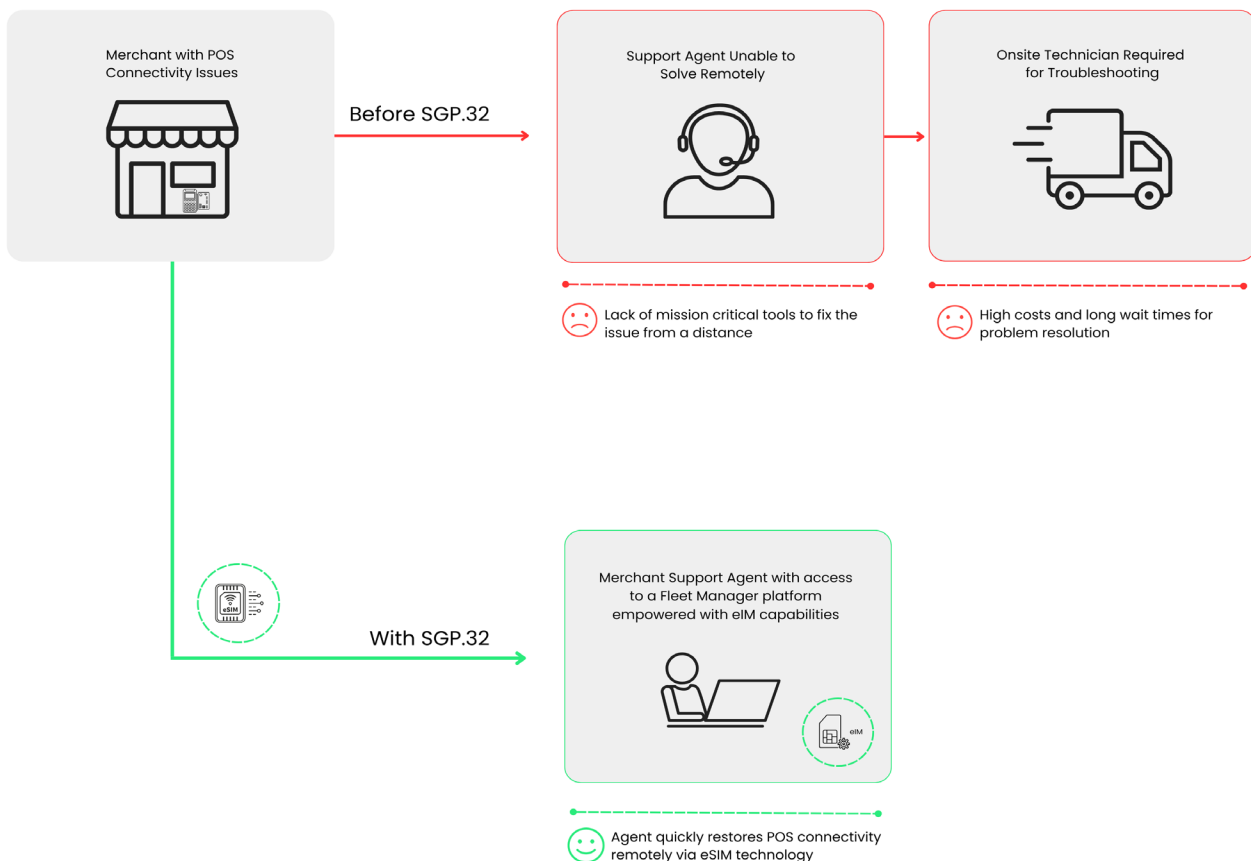
- No On-Site Interventions: Fully remote SIM provisioning and management.
- Fleet Management Made Easy: Centralized architecture for global oversight.

3. Cost Optimization

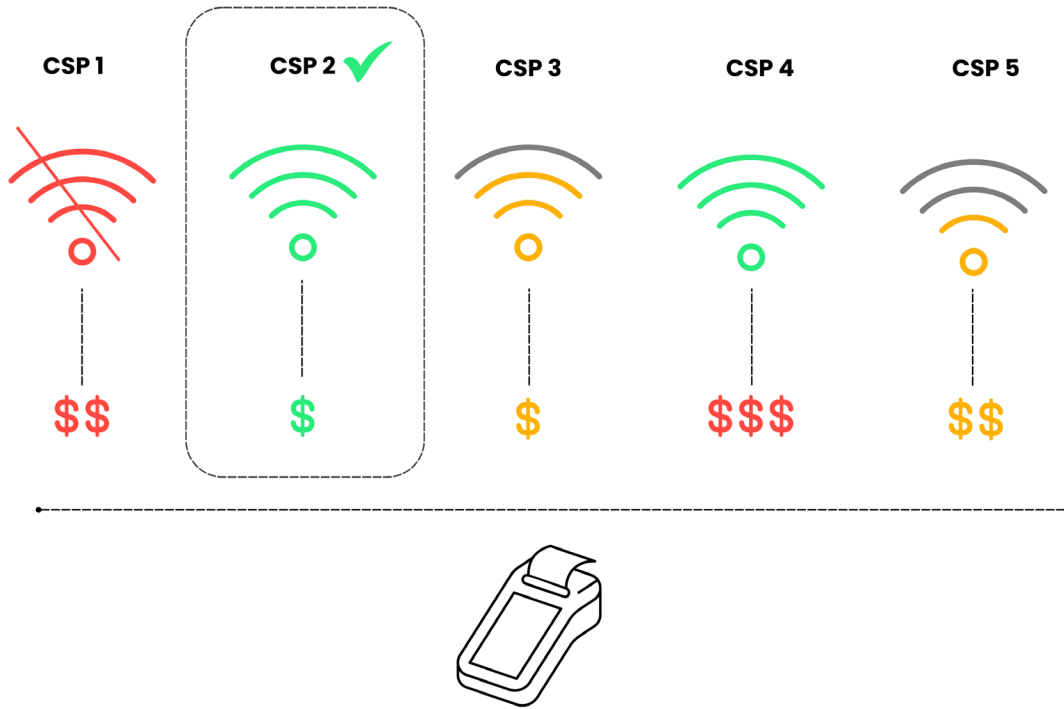
- Reduced Connectivity Costs: Minimizes roaming expenses when combined with multi-IMSI for global
- Lower Maintenance Costs: Eliminate manual SIM swaps and site visits.

4. Future-Ready Technology

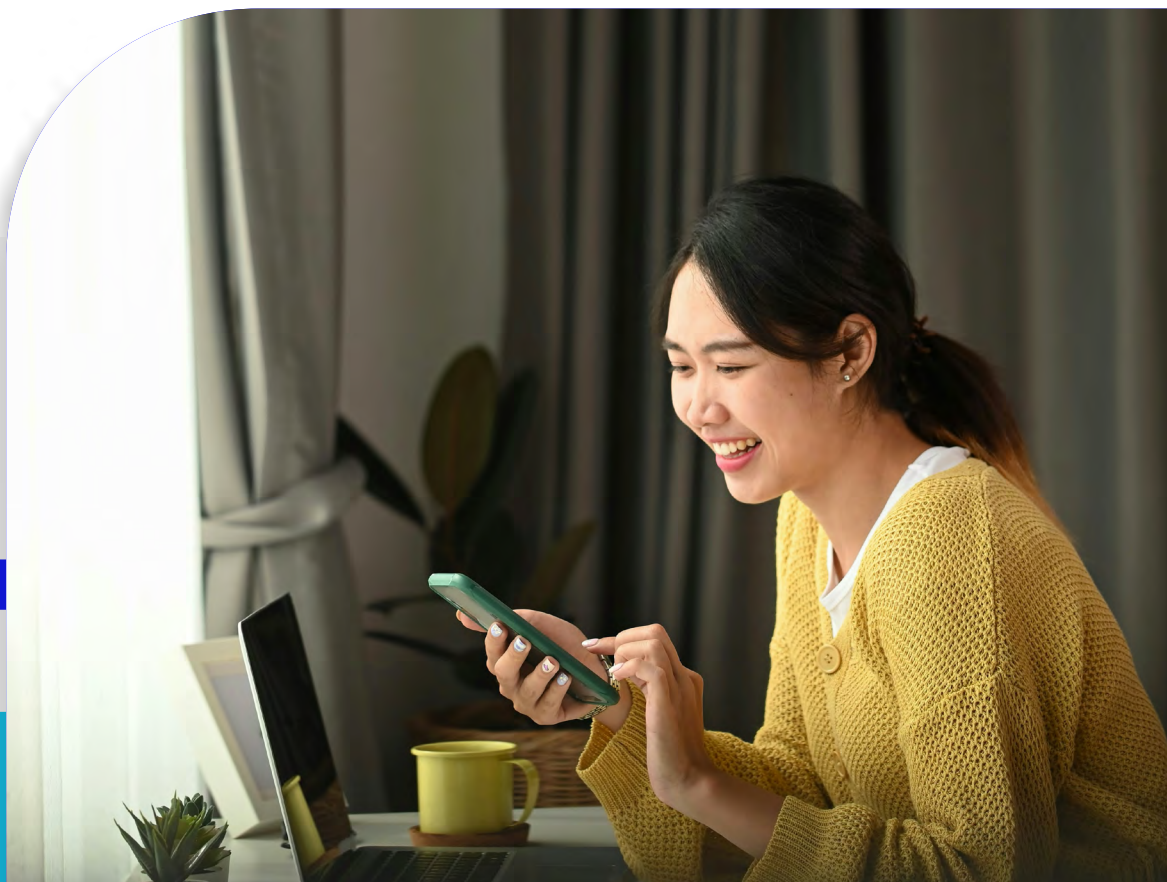
- Scalable Architecture: Easily manage thousands of devices.
- Enhanced Security: Built-in safeguards protect sensitive transaction data.
- Fraud control: eSIMs can come soldered to the PoS terminals reducing fraud risks.



Insight: Valid's Dynamic-IMSI solution ensures uninterrupted global connectivity by automating Dynamic Profile Switching, seamlessly connecting PoS terminals to the best available network.



Note: A connection to a CRM or a CMP (Connectivity Management Platform) may be necessary.



Getting Started with SGP.32

Follow these steps to modernize your PoS fleet:

1. Evaluate Readiness

Assess your existing PoS devices for eSIM compatibility.

2. Collaborate with Our Experts

Define deployment regions and connectivity preferences.

3. Test and Deploy

Work with Valid to test profiles and integrate the solution.

4. Plan a Phased Migration

Seamlessly upgrade your devices to SGP.32 with zero disruptions.



Frequently Asked Questions

1. What makes SGP.32 different from traditional SIM solutions?

eSIM technology eliminates the need for physical SIM card replacements. The new SGP.32 standard enables remote provisioning of subscriptions, simplifying profile switching without manual intervention. This innovation reduces costs, optimizes troubleshooting, and minimizes service interruptions.

2. Is SGP.32 compatible with my current PoS devices?

Compatibility depends on your devices' eSIM readiness. If not supported, external eSIM modules can bridge the gap.

3. Can SGP.32 reduce my roaming expenses?

Yes! SGP.32 enables the configuration of different rules for profile switching when traveling abroad or moving across geographic regions. Meanwhile, Multi-IMSI technology, when combined with Valid's Dynamic-IMSI solution, can automatically identify and connect to lower-cost carriers, optimizing costs and ensuring seamless connectivity."

4. How secure is SGP.32 for financial transactions?

SGP.32 is equipped with industry-standard encryption and secure provisioning, safeguarding data and ensuring security compliance, just like a traditional SIM card.

5. How costly can be an SGP.32 implementation?

Valid's experts can assist in designing a technological solution, selecting the appropriate connectivity services, and defining a business model tailored to your specific needs. Key factors influencing the implementation cost include:

- Average Data Consumption per PoS per Month:
- Current Connectivity Plan Features:
- Specific Connectivity Challenges
- Penetration of eSIM-Compliant PoS in Your Market
- Logistics Turnaround Time for PoS Distribution & Activation

Let's Get Connected!

Your PoS transformation begins today. Partner with Valid to streamline your operations, cut costs, and ensure your devices are always connected. Contact us using the following [link](#).

Valid

Empowering the Future of Connectivity



LinkedIn

[linkedin.com/company/valid-s-a-](https://www.linkedin.com/company/valid-s-a-)



YouTube

[youtube.com/@Valid_SA](https://www.youtube.com/@Valid_SA)

